




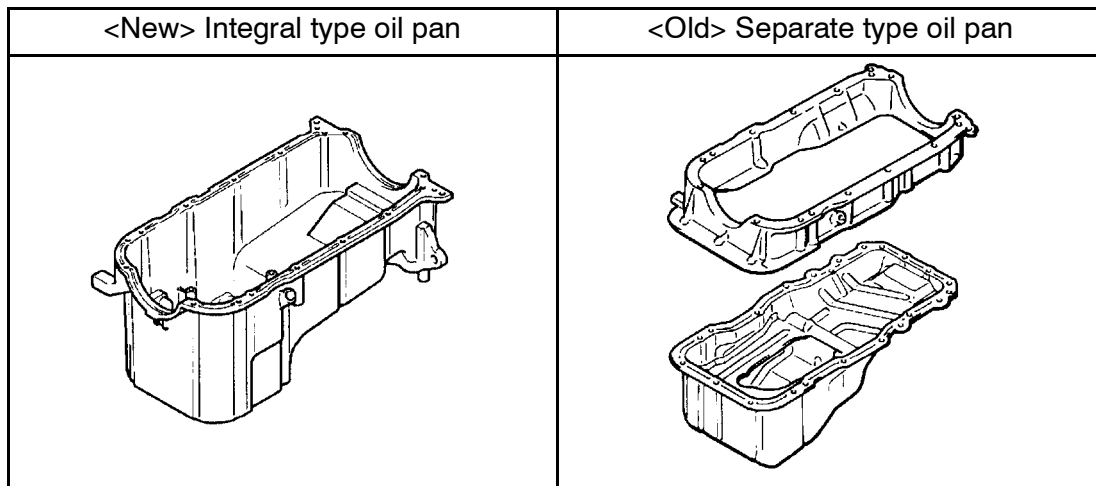
SERVICE BULLETIN

AFTER SALES SERVICE & CS PROMOTION
INTERNATIONAL CAR ADMINISTRATION OFFICE. MITSUBISHI MOTORS CORPORATION

SERVICE BULLETIN		NO. : MSB-00E11-001	
		DATE : 2000-07-20	<MODEL> (EC)MONTERO SPORT/PAJERO SPORT(K80W,K90W)
SUBJECT : REMOVAL & INSTALLATION PROCEDURES FOR INTEGRAL TYPE OIL PAN		<M/Y> 99-10	
GROUP : ENGINE	DRAFTNO. : 00SY051217		
INFORMATION	INTERNATIONAL CAR ADMINISTRATION OFFICE	 T. NITTA - PROJECT LEADER AFTER SALES SERVICE & CS PROMOTION	

1. Description:

The oil pan for the 6G72 engine has been changed from the separate type to an integral type. With this change, the removal and installation procedures for the integral type oil pan have been established.



2. Applicable Manuals:

Manual	Pub. No.	Page
'99 PAJERO SPORT Workshop Manual	PWJE9812 (English)	11A-23, 24
'99 MONTERO SPORT Workshop Manual	PWJS9813 (Spanish)	
'99 PAJERO SPORT Workshop Manual	PWJF9814 (French)	
	PWJG9815 (German)	

3. Effective Date:

From April 22, 2000
Effective model: LY6620 and up
Part numbers: MD370209 (without OLS)
MD370210 (with OLS)

4. Details:

OIL PAN AND OIL SCREEN
REMOVAL AND INSTALLATION

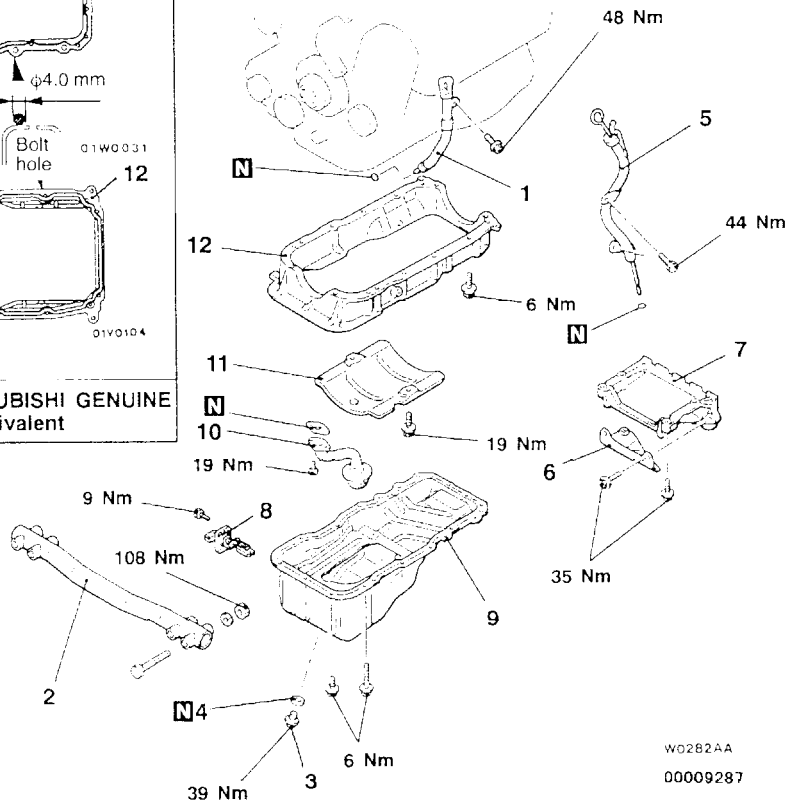
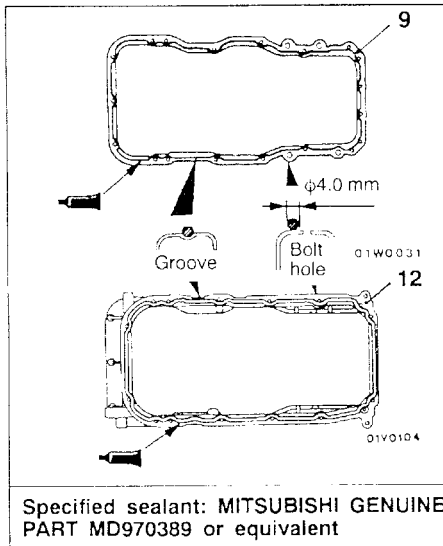
<Vehicles equipped with separate type oil pan>

<Added>

11200250468

Pre-removal and Post-installation Operation

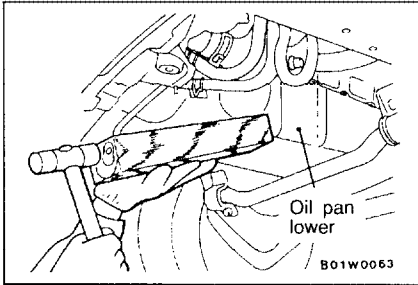
- Skid Plate and Under Cover Removal and Installation
- Engine Oil Draining and Refilling (Refer to GROUP 12 – On-vehicle Service.)
- Alternator Removal and Installation (Refer to GROUP 16 – Alternator.)
- Stabilizer Bar Removal and Installation (Refer to GROUP 33A – Stabilizer Bar.)
- Front Exhaust Pipe Removal and Installation (Refer to GROUP 15 – Exhaust Pipe and Main Muffler.)
- Actuator Assembly and Heat Protector Removal and Installation (Refer to GROUP 26 – Inner Shaft.)



W0282AA
00009287

Removal steps

- | | | | |
|-----|---------------------------------|-----|----------------------|
| ▶C◀ | 1. Oil dipstick assembly | ▶B◀ | 7. Transmission stay |
| | 2. Crossmember assembly | ▶A◀ | 8. Oil level sensor |
| | 3. Drain plug | ▶A◀ | 9. Oil pan lower |
| | 4. Drain plug gasket | | 10. Oil screen |
| | 5. A/T oil dipstick assembly | ▶A◀ | 11. Baffle plate |
| | 6. Exhaust pipe support bracket | | 12. Oil pan upper |



REMOVAL SERVICE POINT

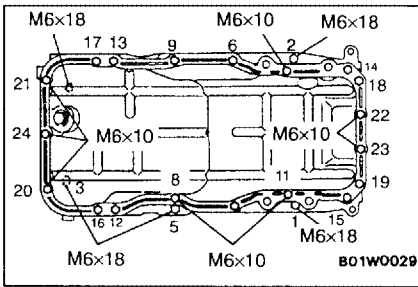
◀A▶ OIL PAN LOWER REMOVAL

1. Remove the oil pan, lower installation bolt.
2. Place a wooden block to the oil pan, lower as shown in the figure and remove by tapping with a hammer.

Caution

The use of an oil pan remover (MD998727) can damage the oil pan, upper (aluminum made).

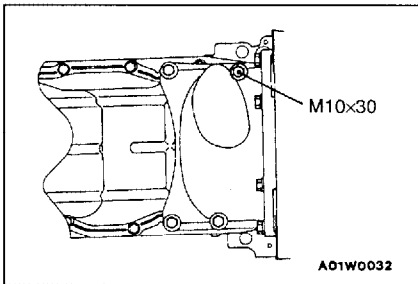
OIL PAN UPPER / <Added>



INSTALLATION SERVICE POINTS

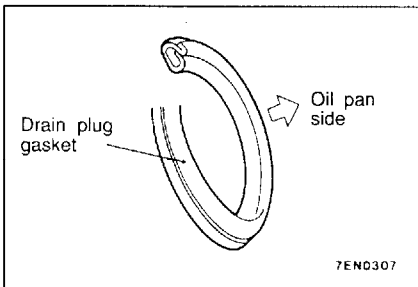
▶A◀ OIL PAN LOWER INSTALLATION

1. Tighten the bolts in order of the numbers shown in the illustration.
2. Be careful when installing, as there are two different lengths of bolt.



▶B◀ TRANSMISSION STAY INSTALLATION

Be careful when installing, as the bolts indicated in the illustration have different lengths from the other bolts.



▶C◀ DRAIN PLUG GASKET INSTALLATION

Replace the gasket with a new gasket. Install the new gasket in the direction shown in the illustration.

INSPECTION

11200260089

- Check the oil pan for cracks.
- Check the oil pan sealant-coated surface for damage and deformation.
- Check the oil screen for cracked, clogged or damaged wire net and pipe.

Following two pages to be added.

<Added>

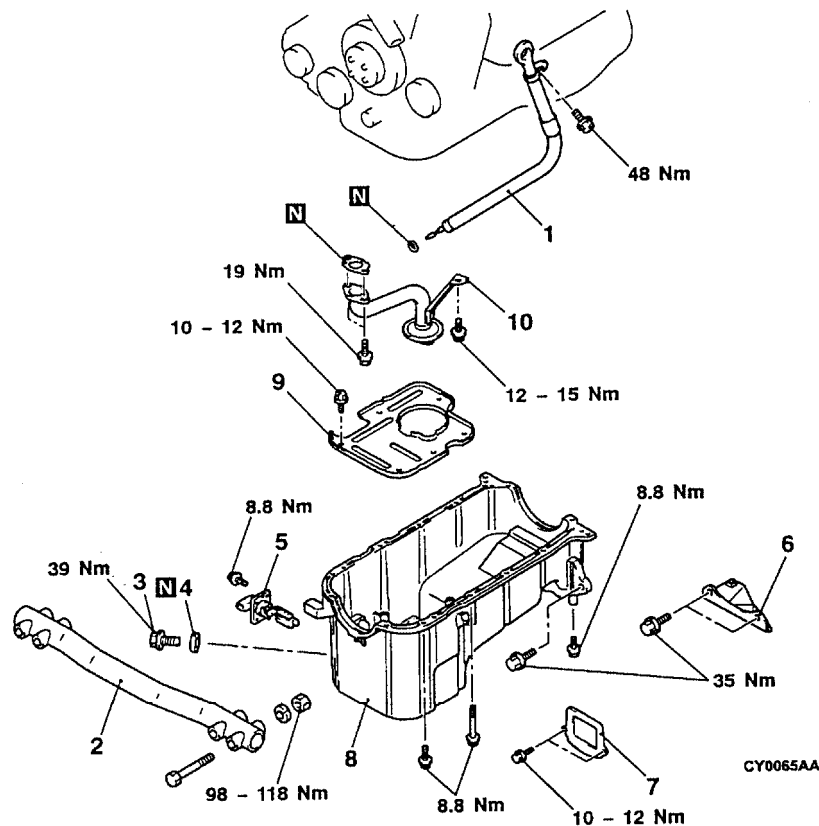
ENGINE <6G7> - Oil Pan and Oil Screen

<Vehicles equipped with integral type oil pan>

REMOVAL AND INSTALLATION

Pre-removal and Post-installation Operation

- Skid Plate and Under Cover Removal and Installation
- Engine Oil Draining and Refilling (Refer to GROUP 12 - On-vehicle Service.)
- Front Differential Gear Oil Draining and Refilling
- Relay Rod Removal and Installation (Refer to GROUP 37A - Steering Linkage.)
- Front Suspension Crossmember, Front Differential, Housing Tube and Differential Mounting Bracket <RH> Assembly Removal and Installation (Refer to GROUP 26 - Differential Carrier.)
- Transmission Oil Cooler Pipe Clamp Removal and Installation <A/T>
- Starter Removal and Installation (Refer to GROUP 16.)
- Front Exhaust Pipe <LH> Removal and Installation (Refer to GROUP 15.)



Removal steps

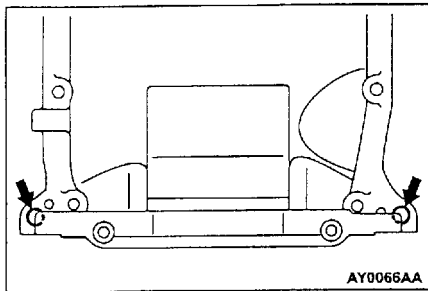
1. Oil dipstick assembly
2. Crossmember assembly
3. Drain plug
4. Drain plug gasket
5. Oil level sensor



6. Exhaust pipe support bracket
7. Oil pan cover
8. Oil pan
9. Baffle plate
10. Oil screen

<Added>

ENGINE <6G7> - Oil Pan and Oil Screen



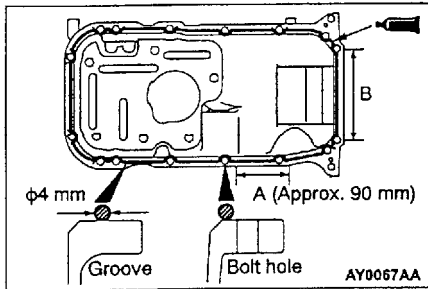
REMOVAL SERVICE POINT

◀▶ OIL PAN REMOVAL

Screw the bolts (M10 x 1.25 mm) into the threaded holes as shown to remove the oil pan.

Caution

The use of an oil pan remover (MD998727) can damage the aluminum oil pan.



INSTALLATION SERVICE POINT

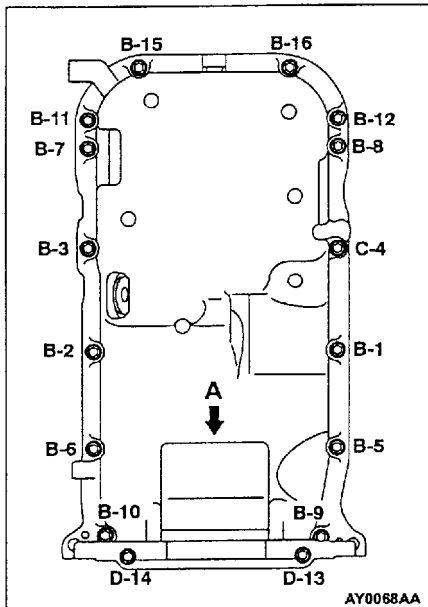
▶◀ OIL PAN / OIL PAN COVER / EXHAUST PIPE SUPPORT BRACKET INSTALLATION

1. Using a scraper, wire brush, etc., remove the gasket adhering to the oil pan and the cylinder block.
2. Apply specified sealant in a continuous bead around the mounting surface of the oil pan as shown in the illustration.

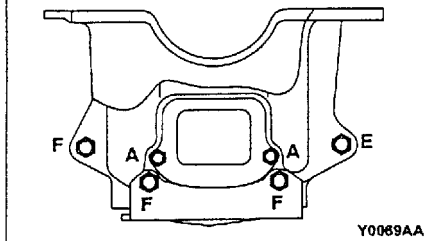
Specified sealant:

MITSUBISHI GENUINE PART No. MD970389 or equivalent

3. Install the oil pan to the cylinder block using care that sealant will not come out of oil pan flanges A and B.
4. Install the oil pan, oil pan cover and exhaust pipe support bracket bolts as shown in the illustration, and tighten them to the specified torque. At this time, tighten flange bolts B and C and washer assembled bolts D in the numerical order shown in the illustration.



View A



Part name	Mark	Q'ty	Dimensions (mm) (nominal diameter x nominal length)	Tightening torque Nm
Flange bolt	A	2	6 x 10	10 - 12
	B	13	6 x 18	8.8
	C	1	6 x 75	
Washer assembled bolt	D	2	6 x 18	35
	E	1	10 x 35	
	F	3	10 x 38	

INSPECTION

11200260089

- Check the oil pan for cracks.
- Check the oil pan sealant-coated surface for damage and deformation.
- Check the oil screen for cracked, clogged or damaged wire net and pipe.