

2. Fit the dial gauge as shown in the diagram and move the hub in the axial direction to measure the play.
Limit: 0 mm (0 inch)
3. If the play exceeds the limit, replace the rear hub assembly.

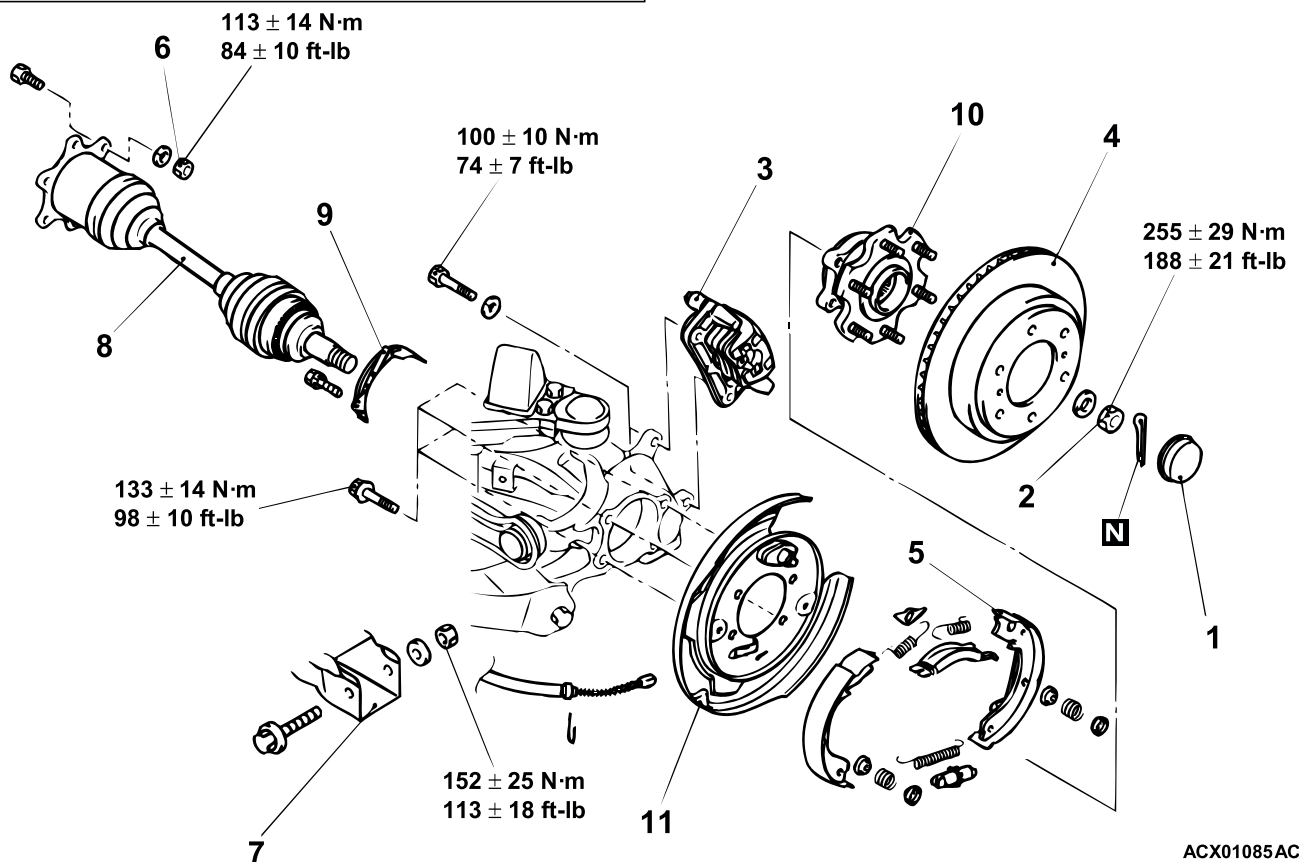
REAR AXLE HUB ASSEMBLY

REMOVAL AND INSTALLATION

M1271002000217

Post-installation Operation

Parking Brake Lever Stroke Adjustment (Refer to GROUP 36, On-vehicle Service P.36-4.)



ACX01085AC

REMOVAL STEPS

1. HUB CAP
2. DRIVE SHAFT NUT
3. REAR BRAKE CALIPER
4. REAR BRAKE DISC
5. PARKING BRAKE SHOE AND LINING ASSEMBLY (REFER TO GROUP 36, PARKING BRAKE DRUM P.36-8.)

REMOVAL STEPS (Continued)

6. COMPANION SHAFT AND DRIVE SHAFT CONNECTION
7. LOWER ARM AND KNUCKLE CONNECTION
8. REAR DRIVE SHAFT ASSEMBLY
9. ABS ROTOR PROTECTOR
10. REAR HUB ASSEMBLY
11. BACKING PLATE

TSB Revision