

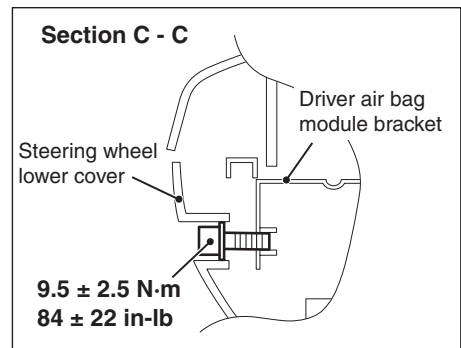
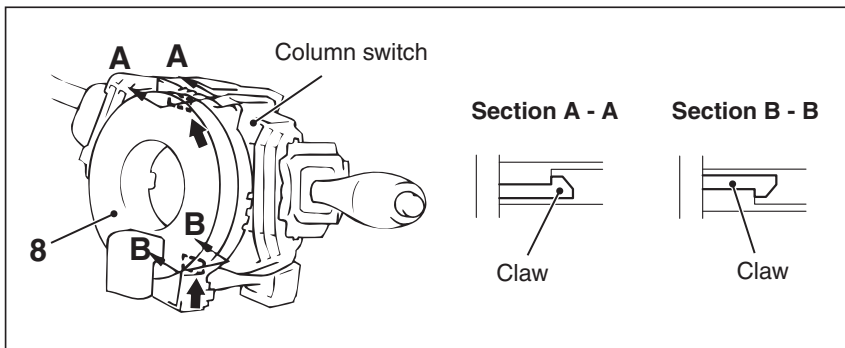
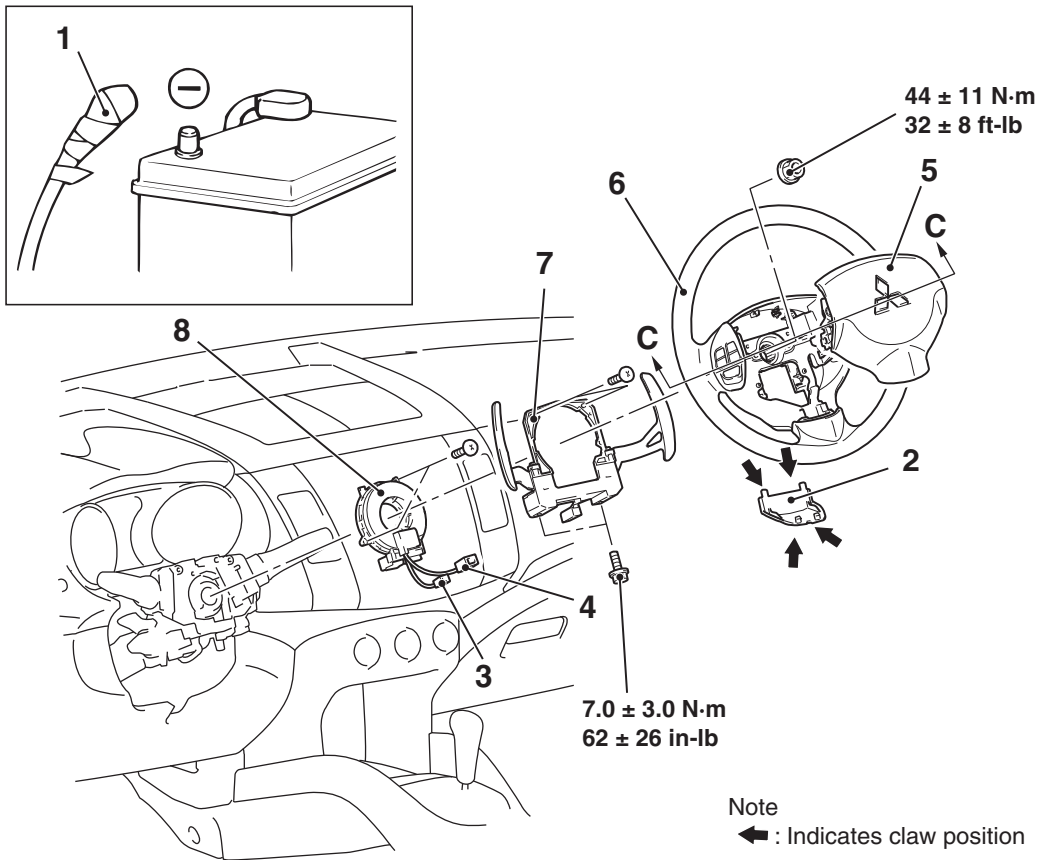
DRIVER'S AIR BAG MODULE AND CLOCK SPRING

**CAUTION**

On vehicles with ASC, always carry out steering wheel sensor calibration after the clock spring has been installed (Refer to GROUP 35C, On-vehicle Service-Steering Wheel Sensor Calibration P.35C-283). This is necessary because the ASC-ECU should update the steering neutral point.

**Pre-removal operation**

- Check that the front wheels are at the straight-ahead position.



AC901070 AB

**Driver's air bag module removal steps**

- <<A>> 1. Negative (-) battery cable connection
- <<B>> 2. Cover
3. Horn connector connection

**Driver's air bag module removal steps (Continued)**

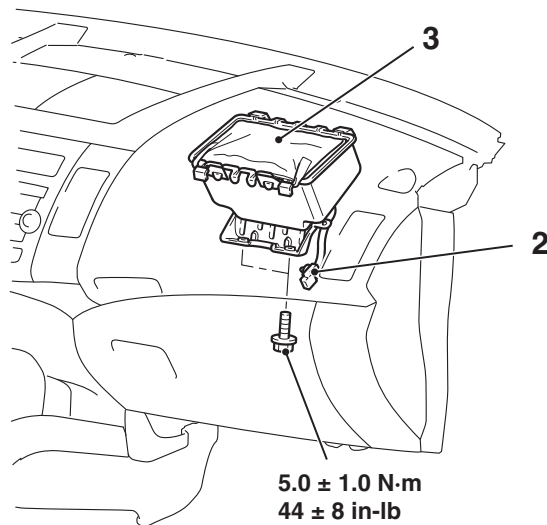
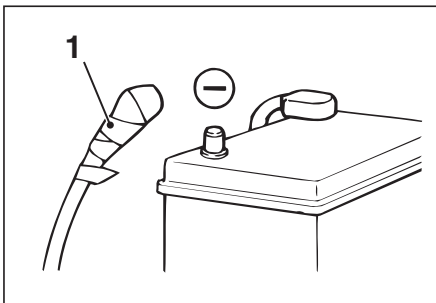
- <<C>> 4. Driver's air bag module connector connection
- <<D>> 5. Driver's air bag module

- |       |   |       |   |
|-------|---|-------|---|
|       | <b>Driver's air bag module installation steps</b>     |       | <b>Clock spring installation steps</b>  |
| >>A<< | • Pre-installation inspection                         |       | • Lower, upper column cover   |
| >>C<< | 5. Driver's air bag module                            |       | 7. Paddle shift assembly <vehicles with paddle shift>   |
| >>D<< | 4. Driver's air bag module connector connection       | >>C<< | 6. Steering wheel assembly  |
|       |   | >>C<< | 5. Driver's air bag module  |
| >>D<< | 3. Horn connector connection                          | >>D<< | 4. Driver's air bag module connector connection   |
|       | 2. Cover  |       |   |
|       | 1. Negative (-) battery cable connection              | >>D<< | 3. Horn connector connection  |
|       |   |       | 2. Cover  |
| >>E<< | • Post-installation inspection                        |       | 1. Negative (-) battery cable connection  |
|       |   | >>E<< | • Post-installation inspection  |
|       |   |       | • Steering wheel sensor calibration (Refer to GROUP 35C, On-vehicle Service – Steering Wheel Sensor Calibration P.35C-283.) |
| <<A>> | 1. Negative (-) battery cable connection              |       |   |
| <<B>> | 2. Cover  |       |   |
| <<C>> | 3. Horn connector connection                          |       |   |
| <<D>> | 4. Driver's air bag module connector connection       |       |   |
| <<E>> | 5. Driver's air bag module                            |       |   |
| <<F>> | 6. Steering wheel assembly                            |       |   |
|       | • Lower, upper column cover                           |       |   |
|       | 7. Paddle shift assembly <vehicles with paddle shift> |       |   |
|       | 8. Clock spring                                       |       |   |
|       | <b>Clock spring installation steps</b>                |       |   |
| >>A<< | Pre-installation inspection                           |       |   |
| >>B<< | 8. Clock spring                                       |       |   |

**Required Special Tools:**

- MB991958: Scan Tool (M.U.T.-III Sub Assembly)
- MB991824: Vehicle Communication Interface (V.C.I.)
- MB991827: M.U.T.-III USB Cable
- MB991910: M.U.T.-III Main Harness A
- MB992006: Extra Fine Probe
- MB990803: Steering Wheel Puller

**PASSENGER'S (FRONT) AIR BAG MODULE**



AC701945 AC

- |       |   |       |  |
|-------|---|-------|--|
|       | <b>Passenger's (front) air bag module removal steps</b> |       | <b>Passenger's (front) air bag module removal steps</b>                              |
| <<A>> | 1. Negative (-) battery cable connection                |       | • Instrument panel assembly (Refer to GROUP 52A, Instrument Panel Assembly P.52A-2.) |
| <<G>> | 2. Passenger's (front) air bag module connector         | <<H>> | 3. Passenger's (front) air bag module  |