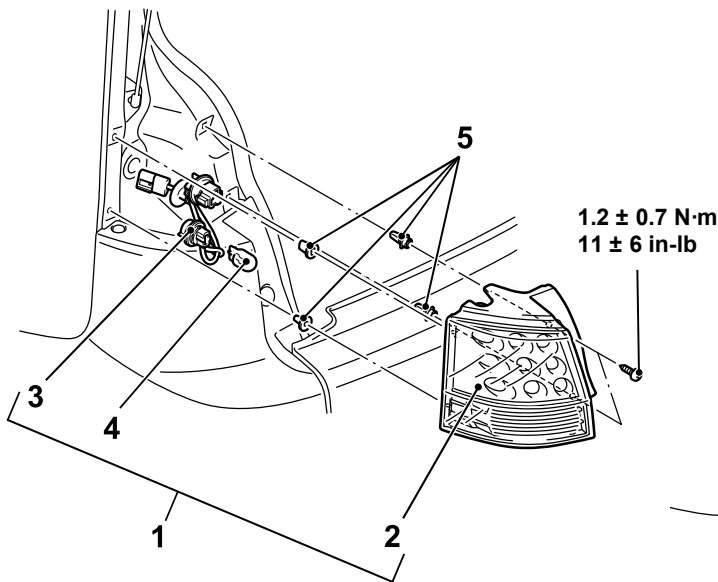


4. Check that voltages show the values described in the graph according to the sensor operation angle.

REAR COMBINATION LIGHT

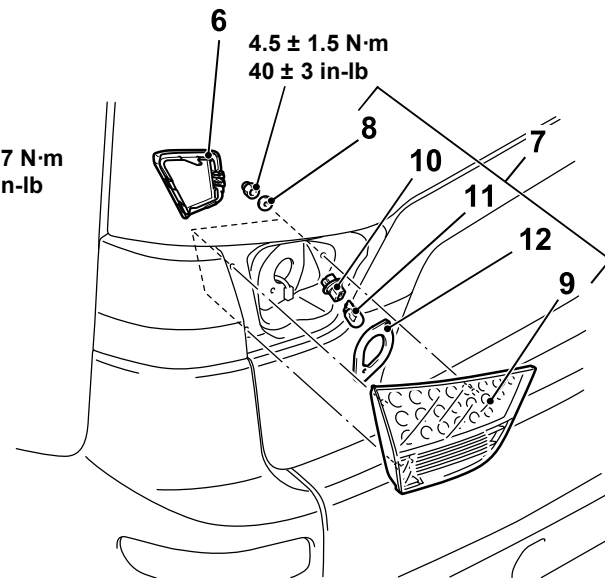
REMOVAL AND INSTALLATION

M15410900056USA0000010000



Removal Steps

1. Rear combination light assembly
2. Rear combination light unit



Removal Steps

3. Socket
4. Bulb

ZC600965AA00

Removal Steps

5. Grommet
6. Liftgate cover garnish (Refer to GROUP 52A - Liftgate Trim P.52A-14)
7. Taillight assembly
8. Gasket

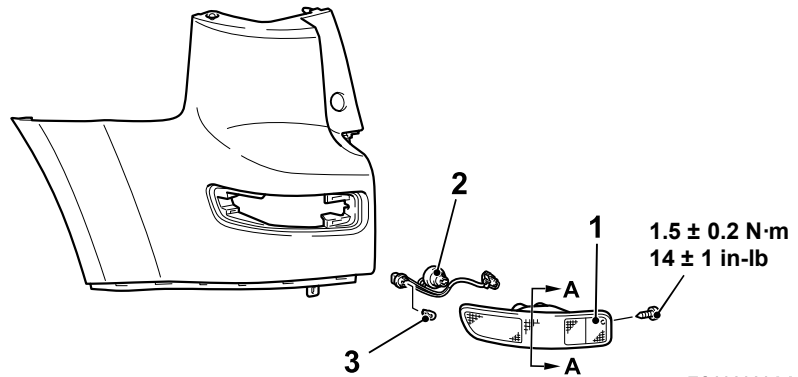
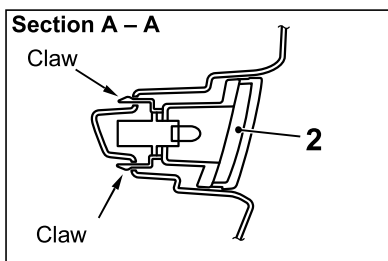
Removal Steps

9. Taillight unit
10. Socket
11. Bulb
12. Gasket

REAR SIDE-MARKAER LIGHT

REMOVAL AND INSTALLATION

M15410900176USA0000010000



Removal Steps

1. Rear corner bumper (Refer to GROUP 51A, Rear Bumper Assembly P. 51A-6.)
1. Rear side-marker light unit

Removal Steps

2. Socket assembly
3. Bulb

FOG LIGHT

ON-VEHICLE SERVICE

FOG LIGHT AIMING

M15410900043USA0000010000

PRE-AIMING INSTRUCTIONS

1. Inspect for rusted or faulty front fog light assemblies.
2. These conditions must be corrected before a satisfactory adjustment can be made.
3. Inspect tire inflation, and adjust if necessary.
4. If the fuel tank is not full, place a weight in the trunk of the vehicle to simulate weight of a full tank [3 kg (6.5 pounds) per gallon].