

Mitsubishi Outlander Gauge Cluster Swap to Color:

Why:

There were several gripes with the amber display I didn't like.

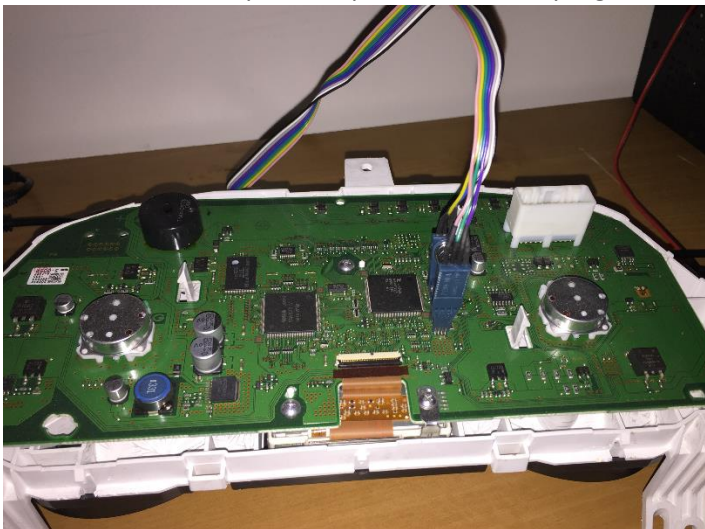
1. It wasn't color.
2. Speedometer was on the left side where I put my arm. So I have to always reposition my arm to see my speed.
3. The backlight was useless during the day, and with the gauges being down a deep tunnel, the gauges were fairly dark. It was hard to read with a quick glance, especially when your pupils are dilated down for bright daytime driving.

Tools Needed:

1. Medium Philips screwdriver.
2. Flathead screwdriver or pry tool.
3. 93C86 EEprom programming tool with SOIC clip and obviously a compatible computer to program with. Also, an eeprom programming software.
4. TachoSoft EEprom mileage calculator software.

Procedure:

1. Pry open the back cover of the new gauge cluster. It's very tight and helps to have several flathead screwdrivers to wedge into the clips, or an extra pair of hands. But really straight forward.
2. Locate the 93C86 eeprom chip and attach the programming clip.



3. Read the EEPROM with the program and save that for future reference.
4. Using the tachosoft program, select 2010 Lancer as the vehicle and input your vehicles current mileage in kilometers. Hit calculate.

6. Before putting the cover back on, lets remove your current cluster and give it a try to see if the mileage is correct.
7. Remove the left Vent and the 1 screw holding the top dash on.



8. Remove the right vent to the left of the radio.



9. Pry on the bottom of the dash cover, then tug the rest off, it should look like this. Also, pull the plug for the info button.



10. Remove the 3 screws holding the cluster on, and pull the plug.
11. Test the new gauge cluster to see if the mileage is correct.



12. If you succeeded with the new mileage, put the back over back on and put it all back together in reverse order.



NOTE: If the check engine light is on, you probably turned on the car with the cluster unplugged. Just get any normal code reader for your OBD port and erase the code, or perhaps try unplugging the battery for a minute and reattach.